

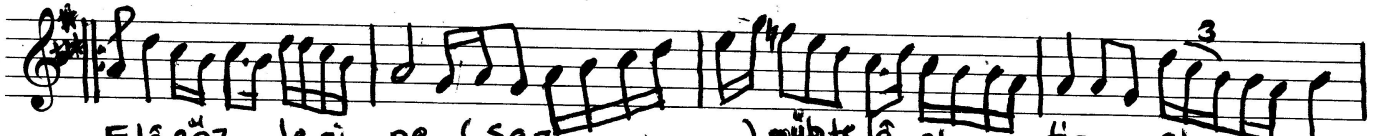
Düyek

HİCAZ ŞARKI
(Elâ gözlerine mübtelâ ettin)

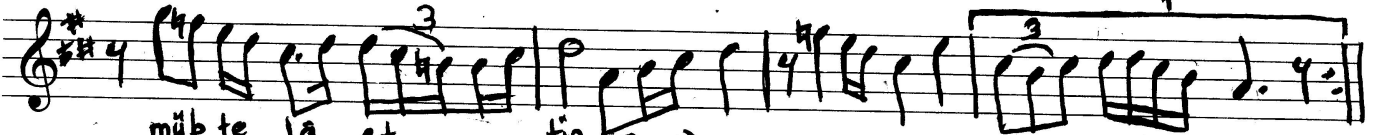
Güfte & Beste:
M. TURE



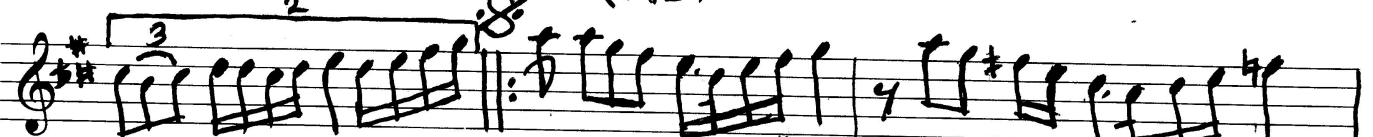
Arasaz...



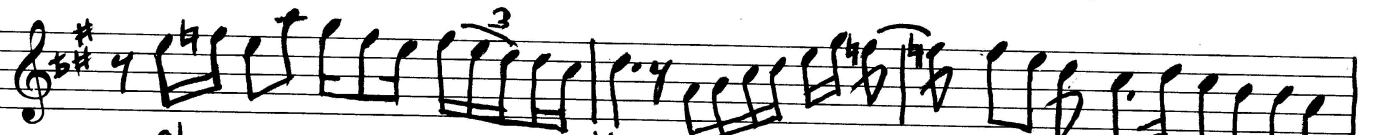
Elâ göz leri ne (saz...) mübtelâ et tin ah...



mübtelâ et tin (saz)



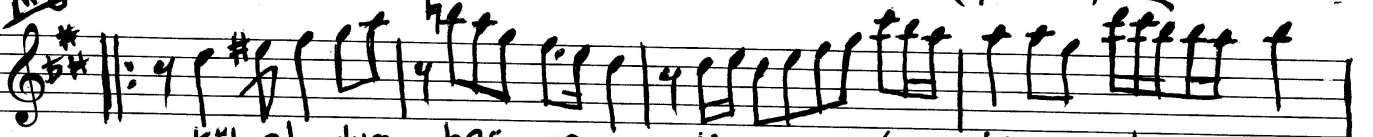
Şu gönlümü peri şan



et... tin (saz) peri şan et



meyan tin (saz) tin (Karar)



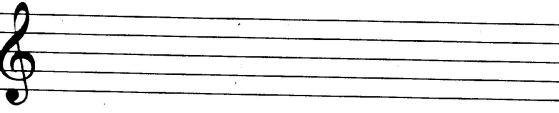
kül ol dum has re tin... le ah...



gel ar tık (saz) tık (saz) gel ar...



tık (saz)



Elâ gözlerine mübtelâ ettin
Şu gönlümü perişân ettin
Kül oldum hasretinle gel artık
Şu gönlümü perişân ettin.